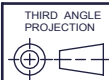
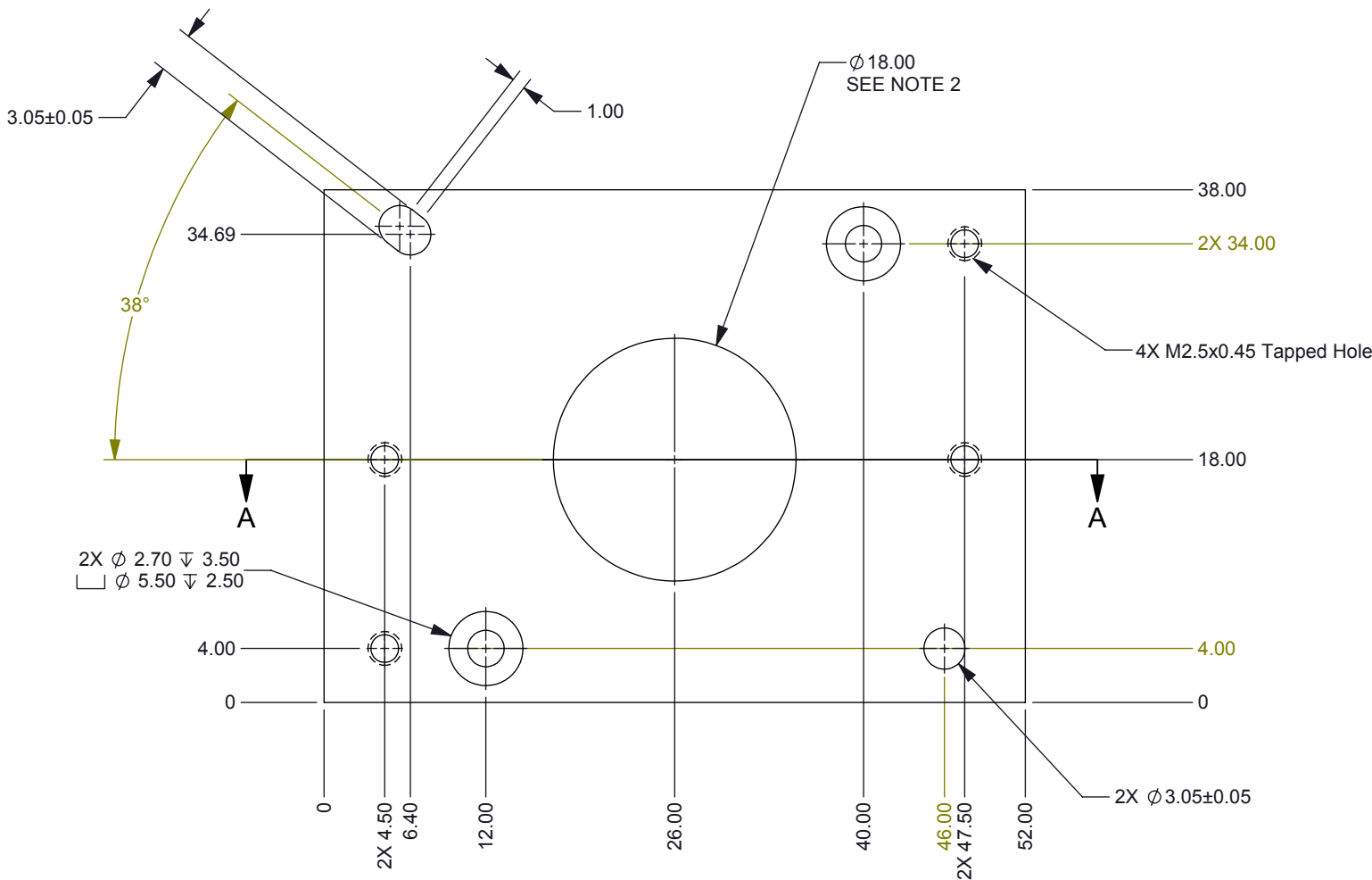
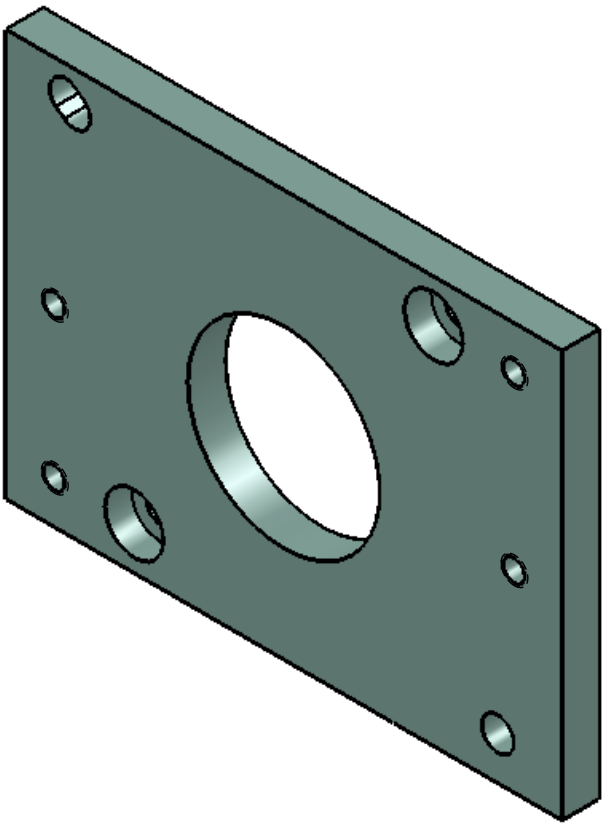
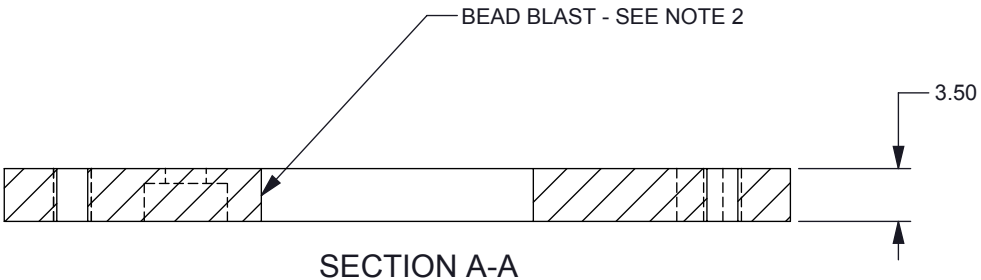


NOTES: UNLESS OTHERWISE SPECIFIED:

1. MATERIAL: 6061-T6 ALUMINUM
2. LIGHT BEAD BLAST EXTERIOR SURFACES INCLUDING 18.00MM DIA HOLE (MATTE FINISH):
3. FINISH: ANOPLATE ANOBLACK EC PROCESS. ALTERNATE BLACK ANODIZING PROCESSES NOT CONSIDERED AN EQUIVALENT

© COPYRIGHT 2013 TEXAS INSTRUMENTS
UNPUBLISHED, ALL RIGHTS RESERVED

REVISIONS			
REV	DESCRIPTION	DATE	BY
A	ECO #2136196 - INITIAL RELEASE	04-15-13	



UNLESS OTHERWISE SPECIFIED

- DIMENSIONS ARE IN MILLIMETERS
- TOLERANCES: ANGLES $\pm 1^\circ$
2 PLACE DECIMALS ± 0.25
1 PLACE DECIMALS ± 0.50
- DIMENSIONAL LIMITS APPLY BEFORE PROCESSES
- INTERPRET DIMENSIONS IN ACCORDANCE WITH ASME Y14.5M-1994
- REMOVE ALL BURRS AND SHARP EDGES
- PARENTHETICAL INFO FOR REF ONLY

DWN R ROWE	DATE 4/15/2013
Engr	
CQE/QA	
CM	
Apprvd	



DETECTOR MOUNTING PLATE

SIZE	DWG NO	REV
B	2513411	A
SCALE 2:1		SHEET 1 OF 1